

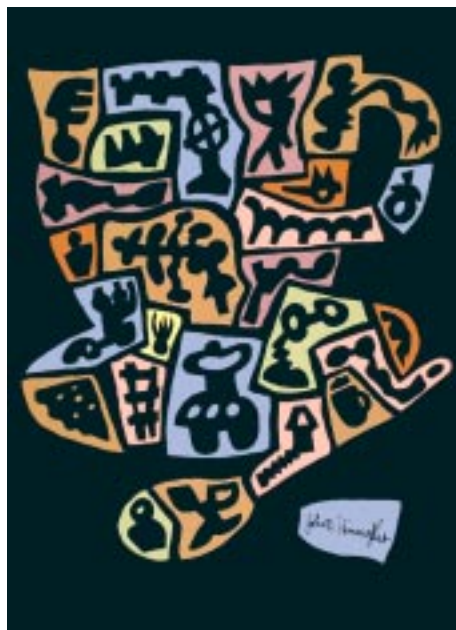
# John Himmelfarb

2004 Screenprint Editions



*Walker*, ed: 30, sh: 29.75"h. x 21.75"w.

*Walker B*, ed:10, sh: 29.75"h. x 21.75"w.



*Pie & Coffee*, ed: 33, sh: 29.75"h. x 21.75"w.

*Cream & Sugar*, ed:10, sh: 29.75"h. x 21.75"w.



*Apple Tail Double Dog*, ed: 30, sh: 29.75"h. x 21.75"w.

*Dalmatian*, ed:10, sh: 29.75"h. x 21.75"w.



All Images © John Himmelfarb 2004

Stewart & Stewart

PRINTER/PUBLISHER OF FINE PRINTS SINCE 1980

5571 Wing Lake Road Bloomfield Hills MI 48301-1250 USA

Tel 248.626.5248 • Fax 248.626.0972 • Email [fineprints@aol.com](mailto:fineprints@aol.com)

[www.StewartStewart.com](http://www.StewartStewart.com)